

# Education and Outreach in the Ghost Watershed 2022

Presented at the  
Annual General Meeting of the  
Ghost Watershed Alliance Society  
Beaupre Hall  
December 3, 2022

Presented by  
Sharlene Fritz





What are they talking about?

Watershed literacy

Land-water connections

Stewardship

Inspire. Inform. Influence.



What will I talk about today?

1. Activities **in** the Ghost Watershed
2. Activities **outside** the Ghost Watershed
3. Mapping and other work

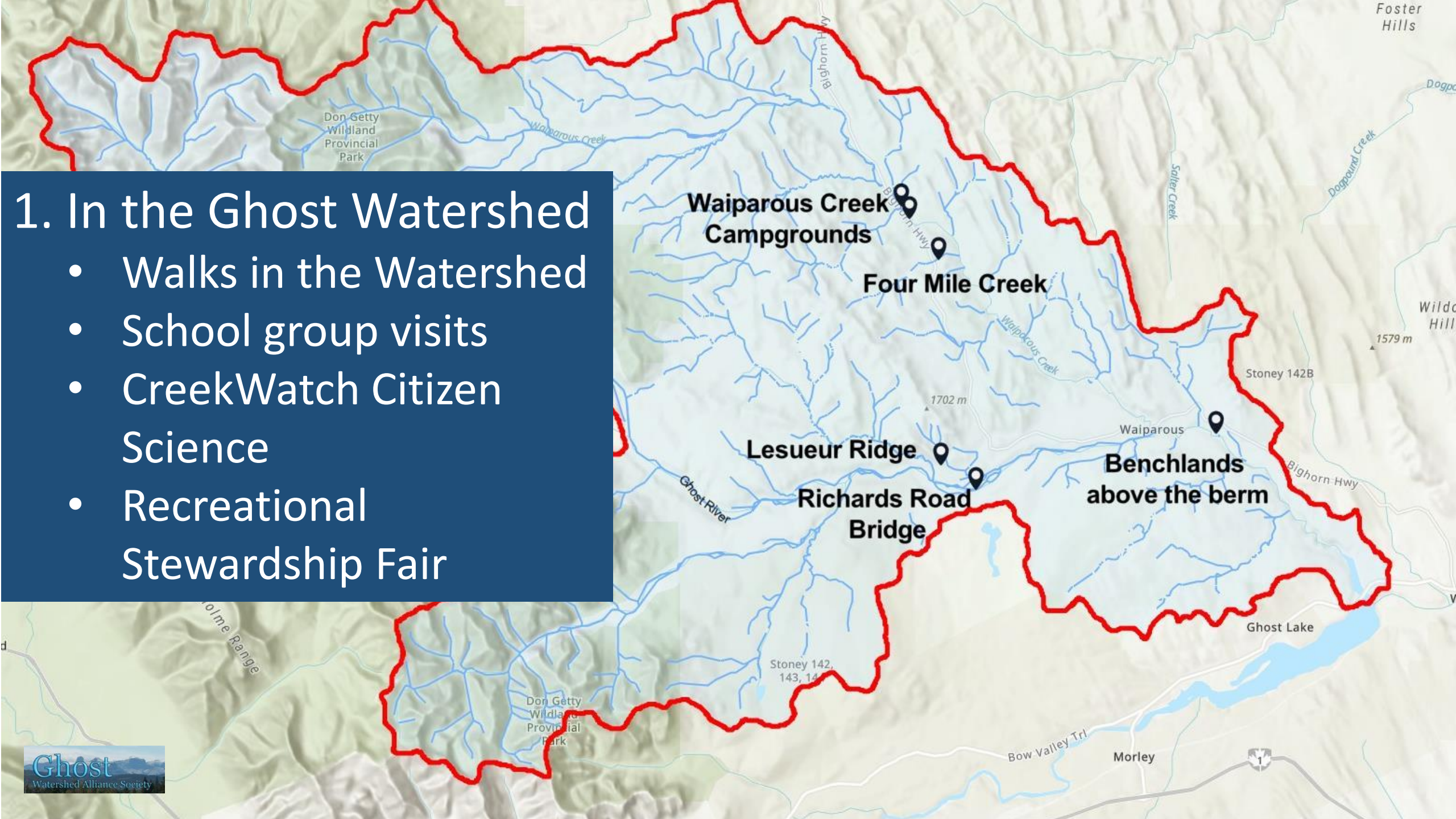
SUMMARY STATS





# 1. In the Ghost Watershed

- Walks in the Watershed
- School group visits
- CreekWatch Citizen Science
- Recreational Stewardship Fair







Lesueur Ridge hike +  
Western toad chorus  
May 15, 2022  
2 volunteers  
8 participants





Lesueur Ridge hike +  
Western toad chorus  
May 15, 2022  
2 volunteers  
8 participants








Waiparous Creek  
Manachaban Grade 8 class  
May 27, 2022  
3 volunteers  
27 participants







Waiparous Creek  
Manachaban Grade 8 class  
May 27, 2022  
3 volunteers  
27 participants







Four Mile Creek  
Manachaban Grade 8 class  
May 27, 2022  
3 volunteers  
27 participants

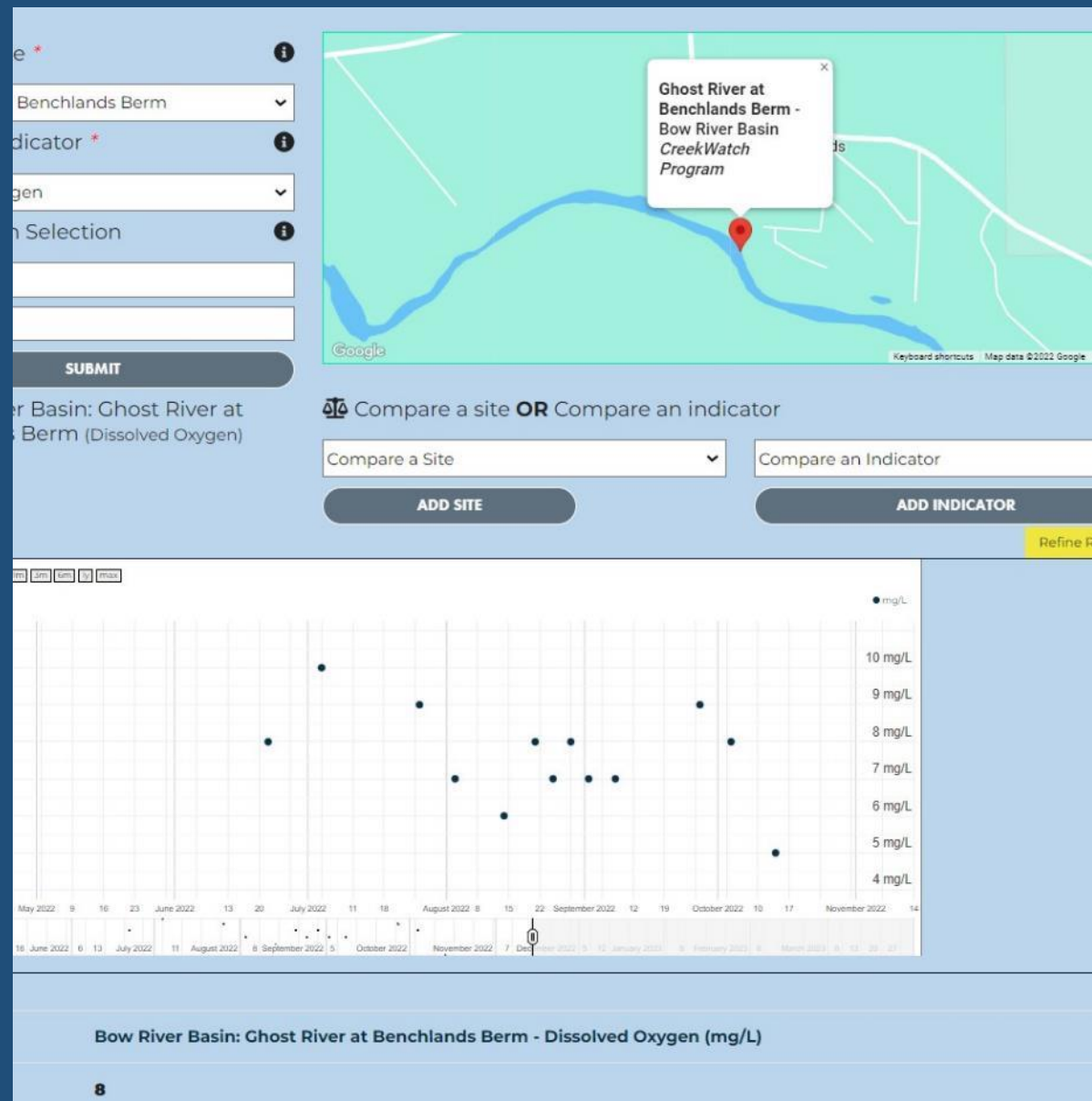






Richards Road bridge site +  
Benchlands above the berm  
CreekWatch Citizen Science  
June through October, 2022  
6 volunteers










Waiparous Creek Campground  
Recreational Stewardship Fair  
September 24, 2022  
4 volunteers  
30+ participants





Lesueur Ridge hike  
FFCA High School  
October 25, 2022  
2 volunteers  
19 participants



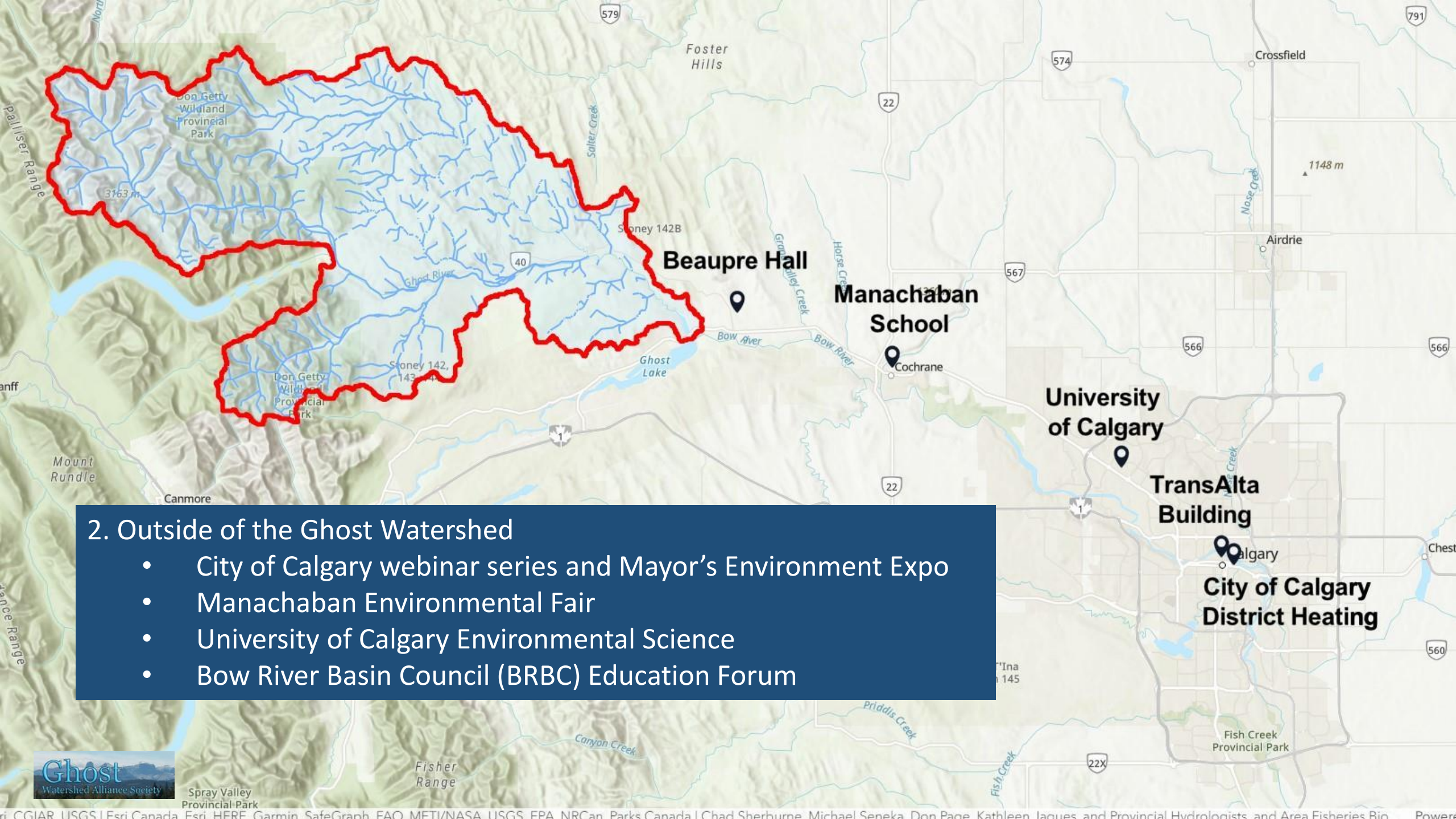




Lesueur Ridge hike  
FFCA High School  
October 25, 2022  
2 volunteers  
19 participants







## 2. Outside of the Ghost Watershed

- City of Calgary webinar series and Mayor's Environment Expo
- Manachaban Environmental Fair
- University of Calgary Environmental Science
- Bow River Basin Council (BRBC) Education Forum



# FIRE

+

# WATER

## How Wildfire Affects Calgary's Source Watersheds & Beyond

City of Calgary's  
Watershed Management Webinar  
February 16, 2022

Presented by:  
Sharlene Fritz  
Ghost Watershed Alliance Society



“Education is not the filling of pail,  
but rather the lighting of a fire.”  
William Butler Yeats



# What is the connection?

+

# Why does it matter?

- What is fire?
- Land-water connection
- Devil's Head wildfire

?








City of Calgary  
Mayor's Environment Expo  
June 1-2, 2022  
1 volunteer  
29 participants in-person  
225 participants online







City of Calgary  
Mayor's Environment Expo  
June 1-2, 2022  
1 volunteer  
29 participants in-person  
225 participants online

**WATER**  
**CONNECTS US**  
*from*  
**PEAK TO PIPE**

Ghost  
Watershed Alliance Society

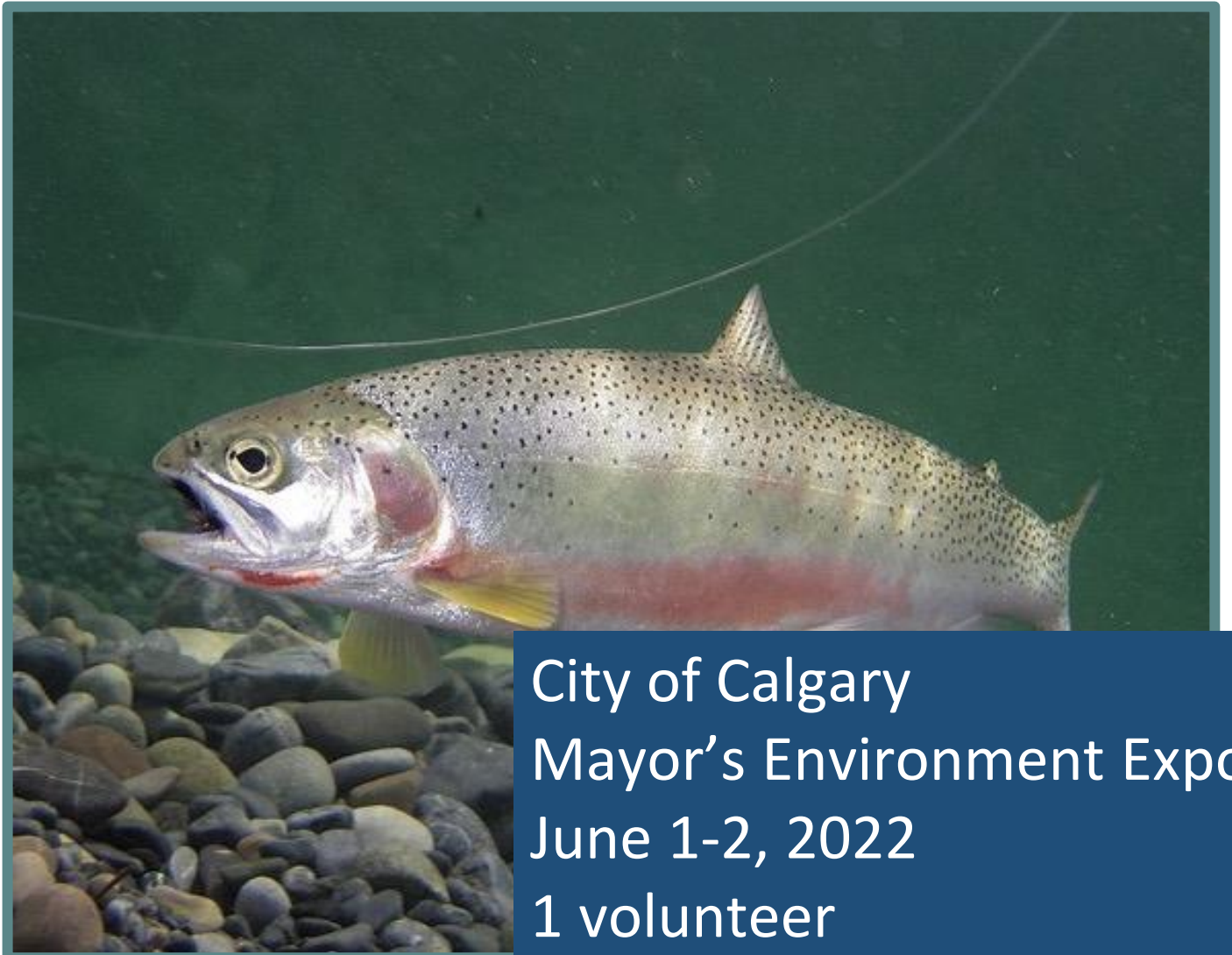
   
Mayor's Environment Expo





# Against the Current:

the story of  
westslope cutthroat  
trout in Alberta's  
headwater  
ecosystems



City of Calgary  
Mayor's Environment Expo  
June 1-2, 2022  
1 volunteer  
29 participants in-person  
225 participants online





Manachaban School  
Environmental Fair  
June 10, 2022  
100+ participants





# The Ghost River Watershed

## Human land use activities & watershed health

Presented to U of C ENSC 501

Presented by

Sharlene Fritz & Marina Krainer  
Ghost Watershed Alliance Society

Presented on August 24, 2022



*Photo: S. Fritz*





Forest Reserve 27 km

Bow River Basin Council  
Education Forum  
September 14, 2022  
40+ participants in-person



# The Rocky Mountains Forest Reserve Story Map

***Presented at***  
the BRBC  
Education  
Forum  
September 14,  
2022

***Project by***  
Forest Matters  
and the Ghost  
Watershed  
Alliance  
Society

***Presented by***  
Sharlene Fritz



Copyright Government of Alberta, Esri, HERE, Garmin, FAO, NOAA, USGS, EPA, NRCAN, Parks Canada, Open Government Licence - Alberta (<https://open.alberta.ca/licence>), Esri, USGS



# Water towers for the Prairies

*Forest reserves were established for "... (1) the reserving of timber supplies, (2) the reserving of areas unsuited to agriculture so that they would not be homesteaded, and (3) the **preserving of the water level in streams by conserving the timber on the upper watersheds.**"*

Source: Government of Canada. (1911). An Act respecting forest reserves and parks. Statutes of Canada, 1-2 George V, Chapter 10. Assented to May 19, 1911. Ottawa

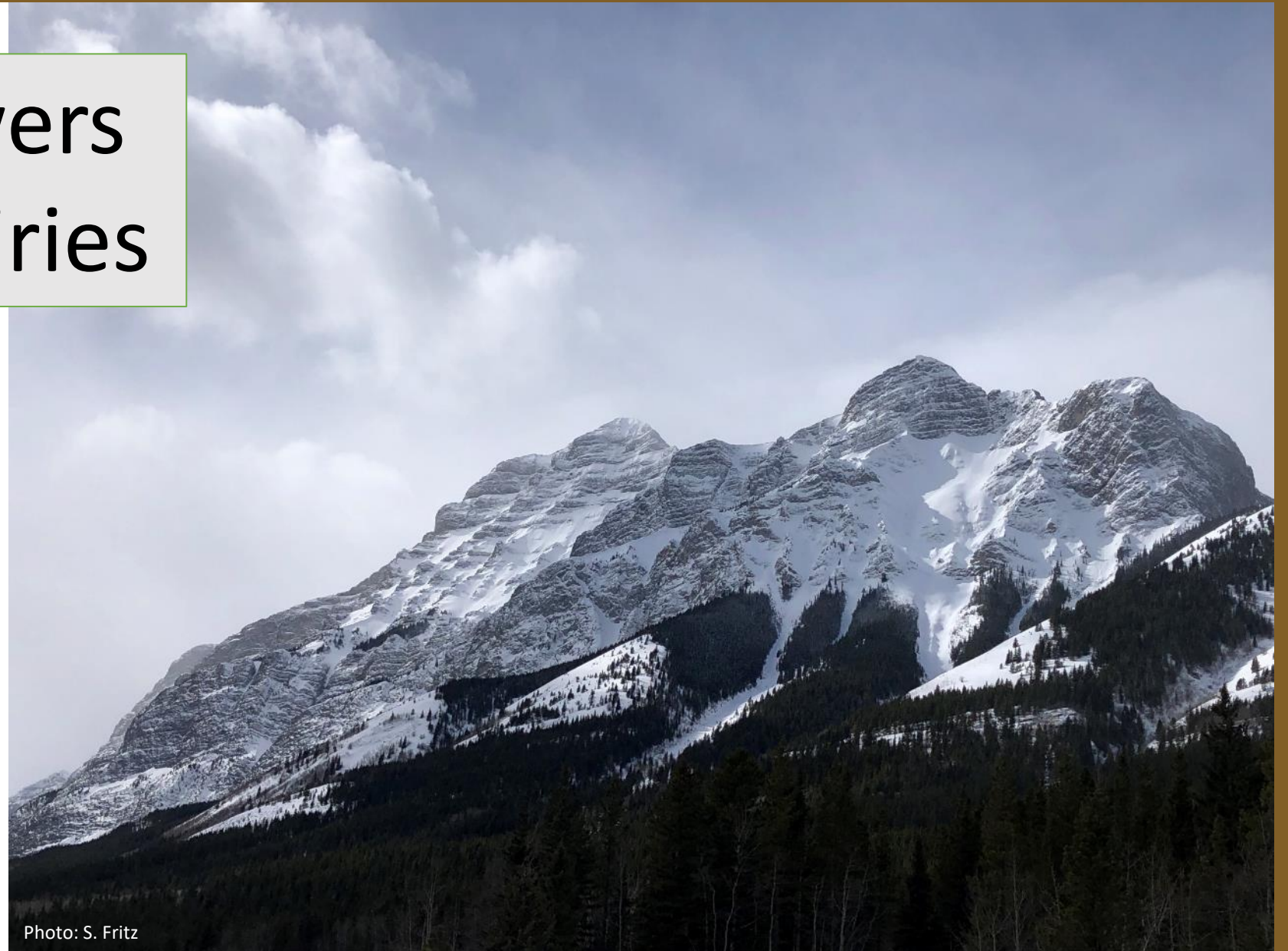
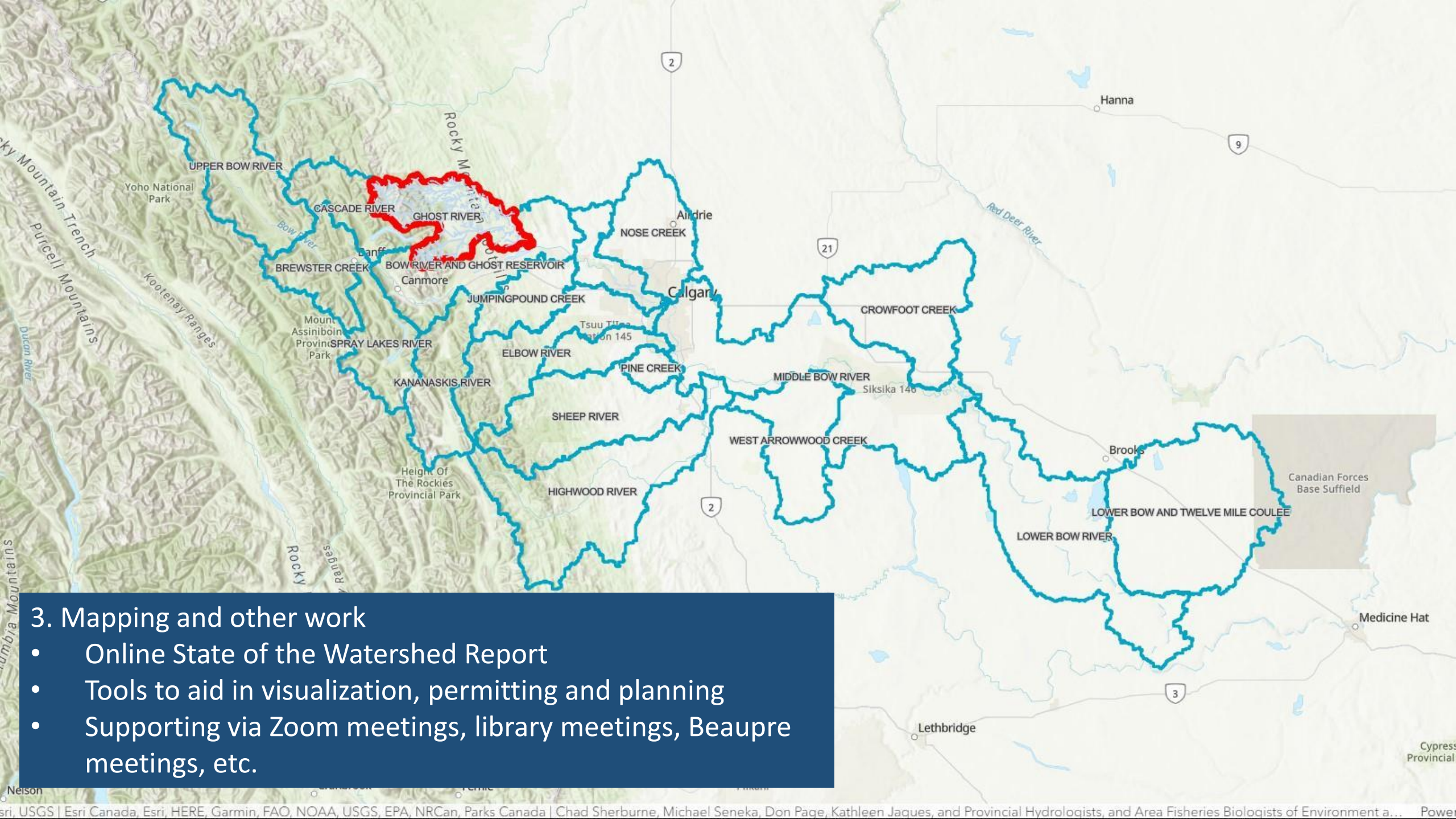


Photo: S. Fritz





### 3. Mapping and other work

- Online State of the Watershed Report
- Tools to aid in visualization, permitting and planning
- Supporting via Zoom meetings, library meetings, Beaupre meetings, etc.



# This Special Place

The Ghost Watershed is a place unlike anywhere else. For thousands of years, this land has been home to plants, animals and people hardy enough to navigate and thrive in its extreme landscape. But increasing human pressures - how we access, use and manage the landscape - are changing the watershed. We all have a role to play today to help protect this special place for tomorrow.





## Ghost Watershed Wetland Inventory Visualization

A compilation of various sources and datasets



Photo: C. Hill

### ABMI Wetland Inventory

Inventory based on satellite imagery

Released March 2021

Accessed November 2022

Reference for Open Data Source:  
DeLancey ER, Simms JF, Mahdianpour M, Brisco B, Mahoney C, Kariyeva J. Comparing deep learning and shallow learning for large-scale wetland classification in Alberta, Canada. Remote Sensing. 2020 Jan;12(1):2. doi: <https://doi.org/10.3390/rs12010002>.  
ABMI. 2021. "ABMI Wetland Inventory - Metadata." Edmonton, Alberta, Canada

[Click here for ABMI Wetland Inventory metadata and technical documentation](#)

A. Polygon - a discrete enclosed area

Basin

Wetland\_Inventory\_Ghost\_polygon

andClass

Bog

Fan

Marsh

Open water

Swamp

Call other values





# Thanks to the support from the following organizations:

\*Alberta Conservation Association \*Alberta Ecotrust \*Bow River Basin Council \*City of Calgary \*Cochrane Environmental Action Committee \*Municipal District of Bighorn  
\*TD Friends of the Environment

---



**TD Friends of the  
Environment  
Foundation**





# Thank you! Questions?

Sharlene Fritz  
Education Coordinator  
[sharlene@ghostwatershed.ca](mailto:sharlene@ghostwatershed.ca)

[www.ghostwatershed.ca](http://www.ghostwatershed.ca)

